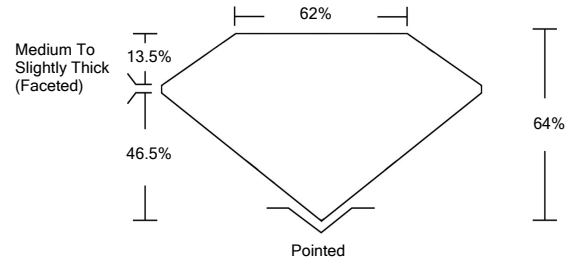




LG478108300

LABORATORY GROWN DIAMOND REPORT

PROPORTIONS

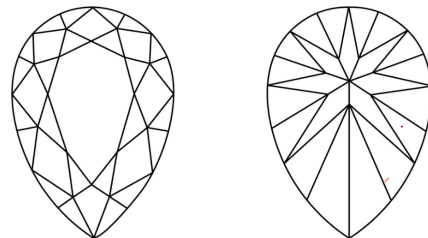


GRADING SCALES

Table with 5 columns for Color Grading Scale (CL to LT) and Clarity (10x) Grading Scale (FL to I). Includes sub-labels like 'COLORLESS D-F', 'NEAR COLORLESS G-J', etc.

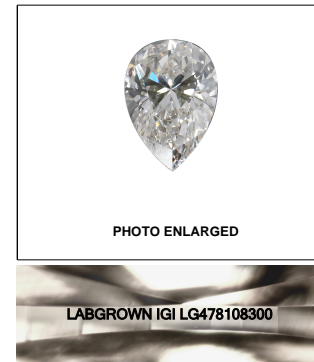
The laboratory grown diamond described in this Report (Report) has been graded, tested, analyzed, examined and/or inscribed by International Gemological Institute (IGI). A laboratory grown diamond is one that has essentially the same chemical, physical and optical properties as a mined diamond...

CLARITY CHARACTERISTICS

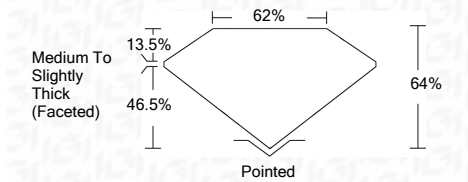


KEY TO SYMBOLS

Red symbols indicate internal characteristics. Green symbols indicate external characteristics.



06/02/2021 IGI Report Number LG478108300 Shape and Cutting Style PEAR BRILLIANT Measurements 11.92 x 8.24 x 5.27 mm GRADING RESULTS Carat Weight 3.01 CARATS Color Grade G Clarity Grade VS 1



ADDITIONAL GRADING INFORMATION

Polish EXCELLENT Symmetry EXCELLENT Fluorescence NONE Inscription(s) LABGROWN IGI LG478108300

Comments: This Laboratory Grown Diamond was created by Chemical Vapor Deposition (CVD) growth process and may include post-growth treatment. Type IIa



06/02/2021 IGI Report No. LG478108300 PEAR BRILLIANT 11.92 x 8.24 x 5.27 mm Carat Weight 3.01 CARATS Color Grade G Clarity Grade VS 1 Depth 64% Table 62% Grade Medium To Slightly Thick (Faceted) Pointed EXCELLENT EXCELLENT NONE LABGROWN IGI LG478108300

This Laboratory Grown Diamond was created by Chemical Vapor Deposition (CVD) growth process and may include post-growth treatment. Type IIa

