

## Identification Data



November 5, 2021  
 LAB GROWN DIAMOND  
 Certificate No: 312990467

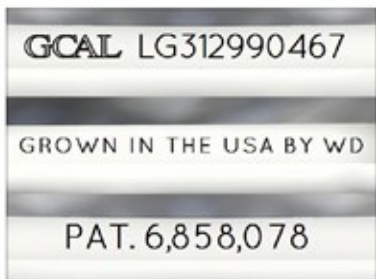
### Gemprint®

Gemprint is the unique optical fingerprint for positive identification of your lab grown diamond. Register your lab grown diamond at [www.Gemprint.com](http://www.Gemprint.com) and receive insurance discounts up to 10%.



### Laser Inscription:

The illustration depicts enlarged and approximate appearances of the inscriptions. Girdle laser inscribed "GROWN IN THE USA BY WD", "PAT. 6,858,078", GCAL Logo and "LG312990467"



## The 4Cs Grading Analysis

GCAL 312990467

LAB GROWN DIAMOND\*

**Carat Weight:**

0.71

**Cut:**

Excellent

**Shape:**

Princess

**Measurements:**

5.00x4.93x3.30mm

**Optical Brilliance:**

Excellent

**Optical Symmetry:**

Very Good

**Polish:**

Very Good

**External Symmetry:**

Very Good

**Girdle Thickness:**

Medium-Sl.Thick

**Culet Size:**

None

**Color:**

G

**Fluorescence:**

None

**Clarity:**

VVS2

**Identifying Characteristic(s):**

Pinpoints

**Characteristic Location(s):**

Table, Half Moon

\*Comments: This laboratory grown diamond was created by the CVD (Chemical Vapor Deposition) method, and has the same chemical, physical, and optical properties as a mined diamond. This diamond is Type IIa, which means it is devoid of nitrogen impurities. As Grown - No evidence of post-growth treatment was detected.

### Photomicrographs:

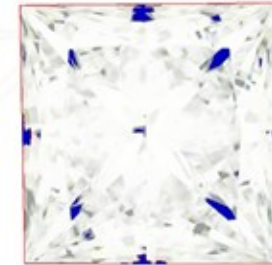
Actual images of the crown (top) and pavilion (bottom) of this diamond photographed at magnifications up to 10x.



## Light Performance Profile

### Optical Brilliance Analysis:

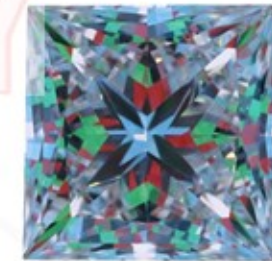
Brilliance is the overall return of light to the viewer. The brilliance image is a representation of (a) white areas of light return, or brilliance, and (b) dark-blue areas of light loss.



Optical Brilliance  
Excellent

### Optical Symmetry Analysis:

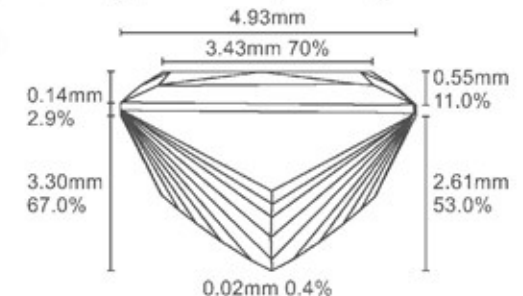
The colored areas of the symmetry image are indications of light handling ability, giving a visual representation of proportions and facet alignment.



Optical Symmetry  
Very Good

### Proportion Diagram:

The proportion diagram illustrates the actual dimensions as recorded by optical scanning technology.



**GCAL** GEM CERTIFICATION & ASSURANCE LAB  
 ISO 17025 ACCREDITED FORENSIC LABORATORY

580 Fifth Ave LL-05  
 New York, NY 10036  
 T 212-869-8985  
 GCALUSA.com



ISO/IEC 17025 2017  
 ANAB L2177-1 Accredited Testing Lab