

IGI GEMOLOGICAL REPORT
IGI LABORATORY GROWN DIAMOND GRADING REPORT

2/20/2019

 IGI Report Number **LG10993913**

 Shape and Cutting Style **PEAR BRILLIANT**

 Measurements **7.42 x 4.66 x 2.65 MM.**
GRADING RESULTS

 Carat Weight **0.53 CARAT**

 Color Grade **G**

 Clarity Grade **SI 1**
ADDITIONAL GRADING INFORMATION

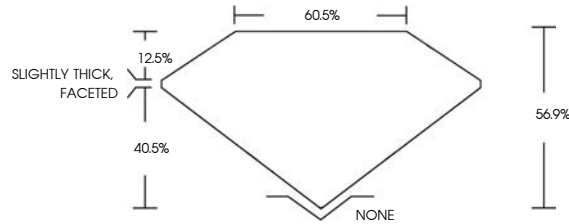
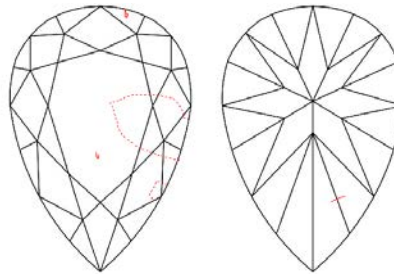
 Polish **VERY GOOD**

 Symmetry **VERY GOOD**

 Fluorescence **NONE**

 Inscription(s) **IGI LG10993913**

 Comments: ADDITIONAL INSCRIPTIONS: CREATED IN
MARYLAND BY WD. MADE IN USA.

PROPORTIONS

CLARITY CHARACTERISTICS

KEY TO SYMBOLS

 Red symbols indicate internal characteristics.
Green symbols indicate external characteristics.

FACSIMILE
GRADING SCALES

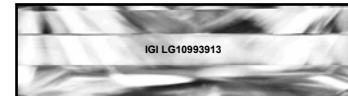
COLOR GRADING SCALE	CL COLORLESS D-F	NC NEAR COLORLESS G-J	FT FAINT K-M	VLT VERY LIGHT N-R	LT LIGHT S-Z
---------------------	------------------------	-----------------------------	--------------------	--------------------------	--------------------

CLARITY (Ibs) GRADING SCALE	FL FLAWLESS INTERNALLY FLAWLESS	IF INTERNAL FLAWLESS	VVS VERY VERY SLIGHTLY INCLUDED	VS VERY SLIGHTLY INCLUDED	SI SLIGHTLY INCLUDED	I INCLUDED
-----------------------------	--	----------------------------	--	------------------------------------	----------------------------	---------------

The laboratory grown diamond described in this Report ("Report") has been graded, tested, analyzed, examined and/or inscribed by International Gemological Institute (I.G.I.). A laboratory grown diamond is one that has essentially the same chemical, physical and optical properties as a mined diamond, with the exception of being grown by man (a manufactured product). I.G.I. employs and utilizes those techniques and equipment currently available to I.G.I., including without limitation, 10X magnification, corrected triplet loupe, binocular microscope, master color comparison stones, non-contact-optical measuring device, Spectrophotometer and such other instruments and/or processes as deemed appropriate by I.G.I. This Report includes advanced security features. A duly accredited gemologist or jeweler can advise you with respect to the importance of and interrelationship between cut, color, clarity and carat weight.

THIS REPORT IS NEITHER A GUARANTEE, VALUATION, NOR APPRAISAL OF THE GEMSTONE DESCRIBED HEREIN. PLEASE REVIEW THE LIMITATIONS AND RESTRICTIONS SET FORTH ONLINE. FOR ADDITIONAL INFORMATION, IMPORTANT LIMITATIONS AND DISCLAIMERS, PLEASE GO TO WWW.IGI.ORG/TERMS.HTML OR CALL 1-888-BUY-IGIS.

© INTERNATIONAL GEMOLOGICAL INSTITUTE, INC.


 LASERSCRIBE SM


The gemstone described in this Diamond Report ("Report") has been graded, tested, analyzed, examined and/or inscribed by International Gemological Institute (I.G.I.). I.G.I. employs and utilizes those techniques and equipment currently available to I.G.I., including without limitation, 10X magnification, corrected triplet loupe and binocular microscope, master color comparison diamonds, non-contact-optical measuring device, and such other instruments and/or processes as deemed appropriate by I.G.I. This Report includes advanced security features. A duly accredited gemologist or jeweler can advise you with respect to the importance of and interrelationship between cut, color, clarity and carat weight. **THIS REPORT IS NEITHER A GUARANTEE, VALUATION NOR APPRAISAL OF THE GEMSTONE DESCRIBED HEREIN. PLEASE REVIEW THE LIMITATIONS AND RESTRICTIONS SET FORTH. FOR ADDITIONAL INFORMATION AND IMPORTANT LIMITATIONS AND DISCLAIMERS, PLEASE SEE WWW.IGIONLINE.COM OR CALL 1-888-BUY-IGIS.** ©2014 I.G.I.


igionline.com/igweb/online-report